

## GLIDEMEISTER | MF TWIN | 1996 | FANUC 16T

### TURN MILL CENTRE



*MODEL*

**MF TWIN**

*YEAR*

**1996**

*CONTROLLER*

**FANUC 16T**

The above Info is to the best of our Knowledge, but it's not binding in detail.

## TECHNICAL DATA

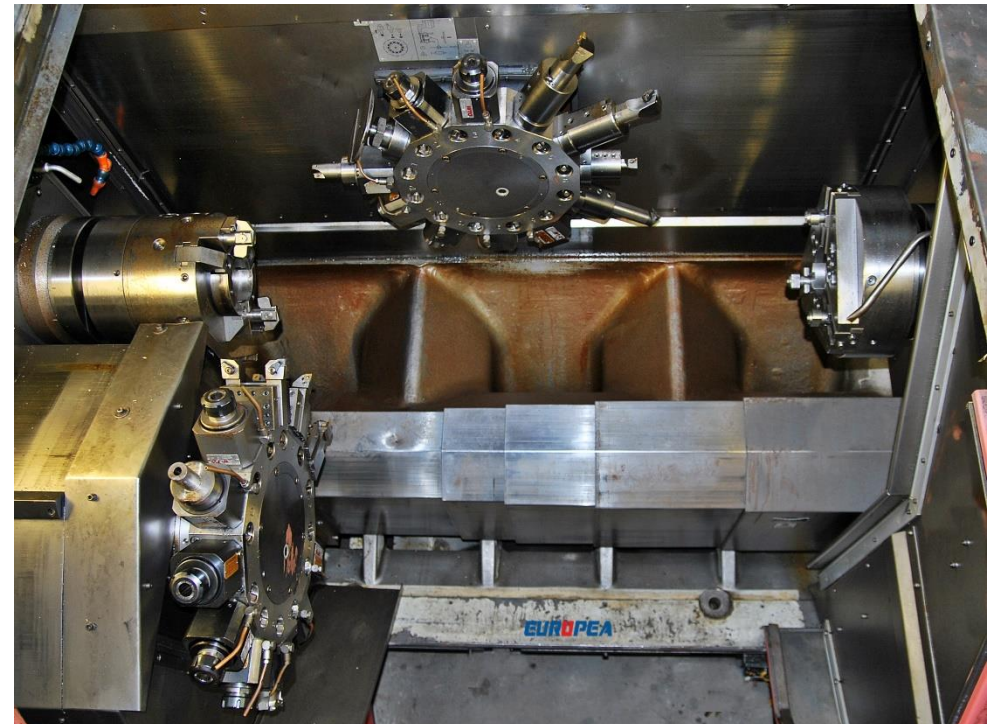
GLIDMESTIER MF TWIN	
Max. Turning length (Z Axis)	42.5 in
Turning Diameter Over Bed (Max)	12.6 in
Turning Diameter over cross Slide (Max)	9.8 in
Max. Travel Length in the X Axis	7.8 in
Max. Feed Rate in X Axis	944.9 in/min
Max. feed Rate in Z Axis	0 ft/min
Max. Power of the Main Spindle	33.5 HP
Diameter of the Spindle Bore	3.1 in
Min. Rotary Speed of the Main Spindle	20 RPM
Max. Rotary Speed of the Main Spindle	4000 RPM
No. of Tool Turrets	2 Pcs
Total No of Tools in the Turret	12 Pcs
Length Of the Lathe	232.3 in
Width of the Lathe	91.7 in
Height Of the Lathe	78.7 in
Weight of the Lathe	13.2 Short Ton

The above Info is to the best of our Knowledge, but it's not binding in detail.

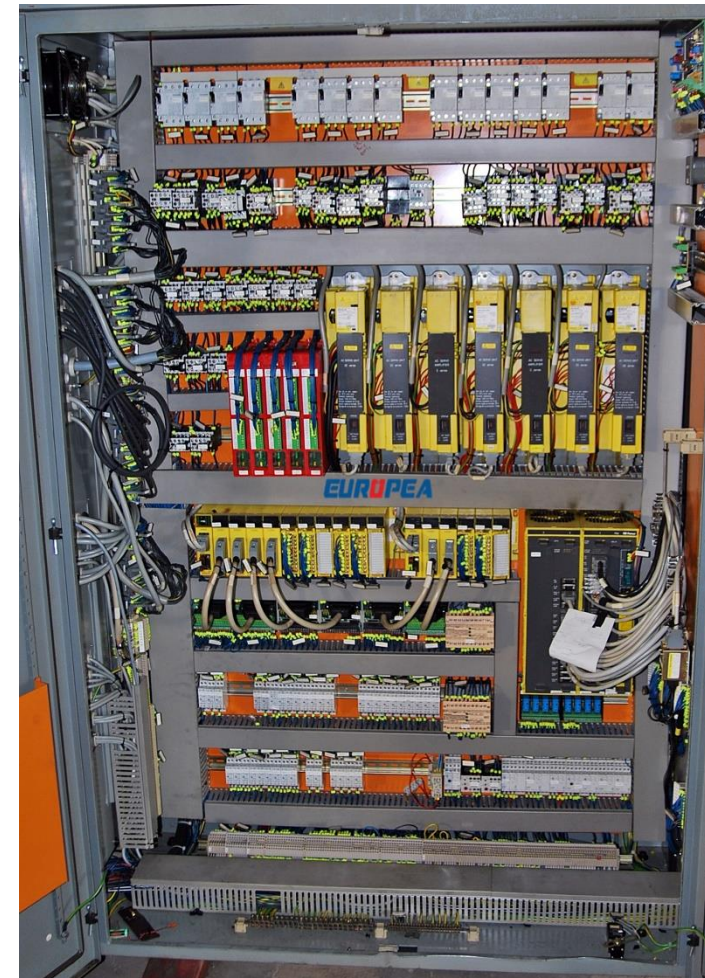
## MACHINE PHOTOS



The above Info is to the best of our Knowledge, but it's not binding in detail.



The above Info is to the best of our Knowledge, but it's not binding in detail.



The above Info is to the best of our Knowledge, but it's not binding in detail.