

HYUNDAI | KIATURN 21 | 1997 | FANUC OT

TURNING CENTRE



MODEL

KIA TURN 21

YEAR

1997

CONTROLLER

FANUC OT

The above Info is to the best of our Knowledge, but it's not binding in detail.

TECHNICAL DATA

CAPACITY

Max. Swing	450 (17.7) Mm(In)
Chuck Diameter	210 (8.3) Mm(In)
STD. Machining Diameter	210 (8.3) Mm(In)
Max. Machining length	390 (15.4) Mm(In)
Bar Capacity	51 (2.0) Mm(In)

SPINDLE

Spindle Speed	25 – 4000 RPM
Spindle Nose	A2-6
Spindle Through hole Diameter	59 (2.32) Mm(In)
Bearing Diameter of the Spindle	90 (3.54) Mm(In)

TOOL POST

Turret Type	10 Angle Variable Arrangement
No of Tools	10 Tools
OD Tool Size	25 (1.0) Mm(In)
ID Tool Size	32 (1 ¼) Mm(In)
Turret Index Time	0.1 / Face Sec

FEED

X Axis Feed	160 (6.3) Mm(In)
Z Axis Feed	410 (16.1) Mm(In)

FEED RATE

X Axis Rapid Speed	984 (25) ipm (m/min)
Z Axis Rapid Speed	1,181 (30) ipm (m/min)
Cutting Feed rate	0.01 – 500,000 (0.001 -19,685) mm/rev (ipr)
Jog Feed rate	0 – 2000 (0 – 78.7) mm/rev (ipr)

The above Info is to the best of our Knowledge, but it's not binding in detail.

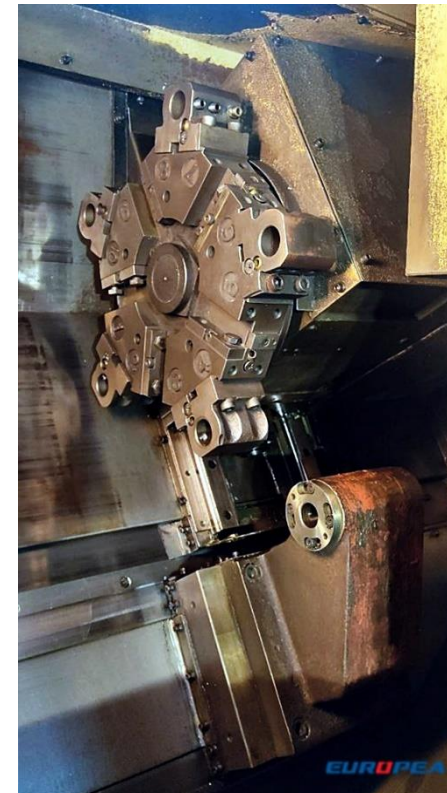
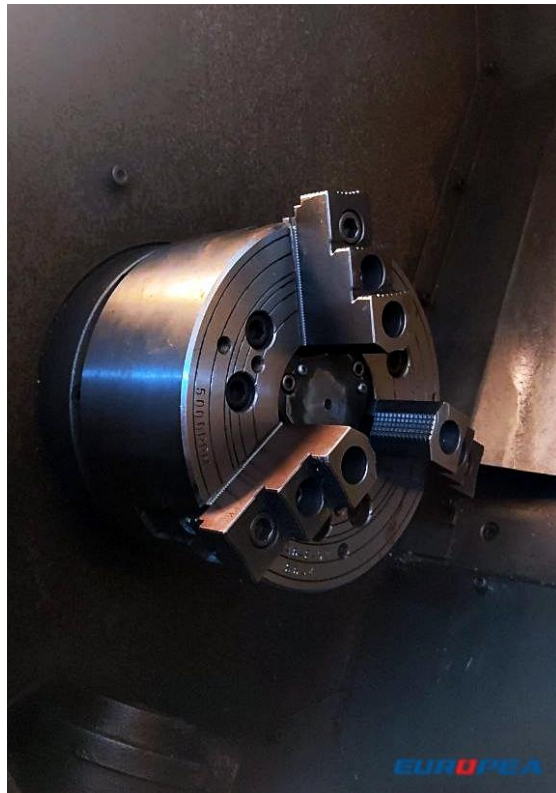
TAIL STOCK	
Tail Stock Stroke	400 (15.7) Mm(In)
Tail Stock Taper	MT 4
MOTOR	
Spindle Continuous / 50 % ED	15/20 (11/15) HP(AC Kw)
Feed Motor X Axis	1.9 (1.4) HP(AC Kw)
Feed Motor Z Axis	1.9 (1.4) HP(AC Kw)
Coolant unit	1/4 (0.18) HP(AC Kw)
Power Capacity	100 (22) A (KVA)
Machine Weight – 9,000 (4,100) lbs(kg)	

The above Info is to the best of our Knowledge, but it's not binding in detail.

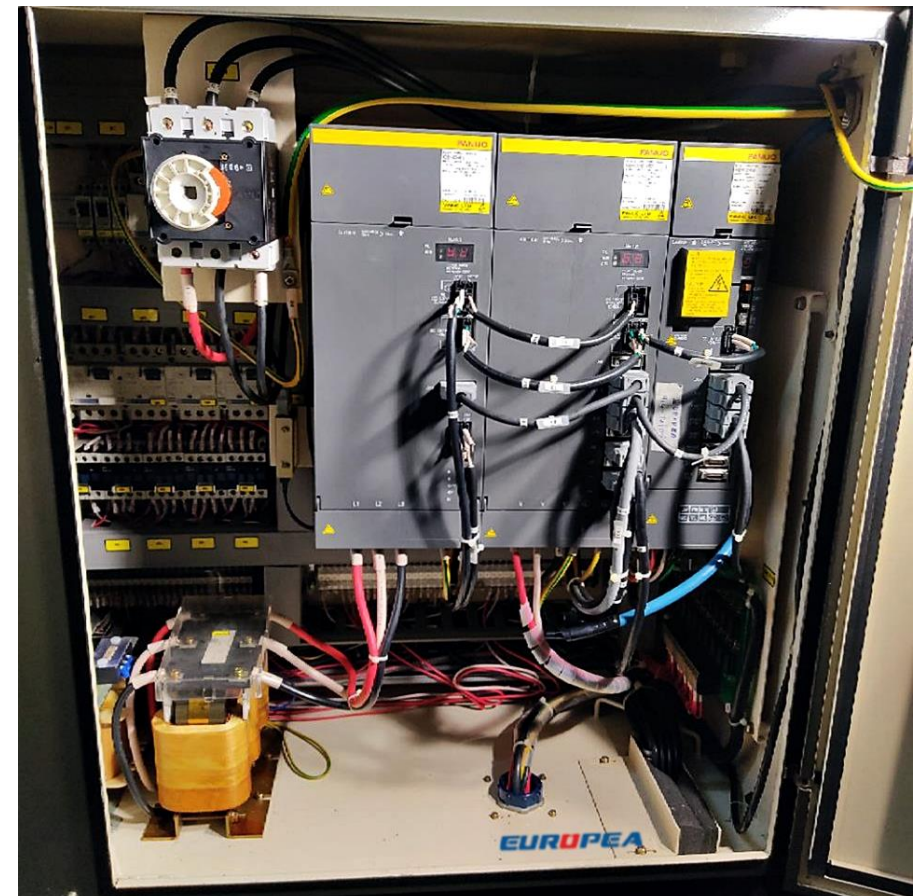
MACHINE PHOTOS



The above Info is to the best of our Knowledge, but it's not binding in detail.



The above Info is to the best of our Knowledge, but it's not binding in detail.



The above Info is to the best of our Knowledge, but it's not binding in detail.