

HITACHI SEIKI | CS 20 | 2001 | FANUC 21T

Inverted-head Turning Centre



MODEL

CS 20

YEAR

2001

CONTROLLER

FANUC 21 T

The above Info is to the best of our Knowledge, but it's not binding in detail.

TECHNICAL DATA

<i>ITEM</i>		<i>CS 20</i>
Capacity	Swing Over cross Slides	400 mm (15.7")
	Chuck Outer Diameter	210 mm (8.3")
	Max. Machining Diameter	Ø 400 mm (Ø 15.7")
	Max. machining Length	150 mm (5.9")
Spindle	Spindle Speed	30 ~ 5000 min ⁻¹
	Spindle Speed Range	Stepless
	Spindle Nose (type, No)	A2 – 6
	Diameter of Spindle through hole	Ø 59 mm (Ø 2.3")
	Spindle Bearing Inside Diameter	100 mm (3.9")
Turret Head	Turret type	12 – Station VDI Rotating Turret
	No. Of Tools	12 Tools
	Boring bar Size	32 (B/H hole dia. 40)/1 – ¼" (Hole 1.5")
	Shank Size Of O.D Tool	25 mm (1")
Travel	X axis travel	1310 mm (51.5") (Cutting area: 190 (7.5"), Loader Area: 1120 (44"))
	Z Axis travel	370 mm (14.6")

The above Info is to the best of our Knowledge, but it's not binding in detail.

TECHNICAL DATA

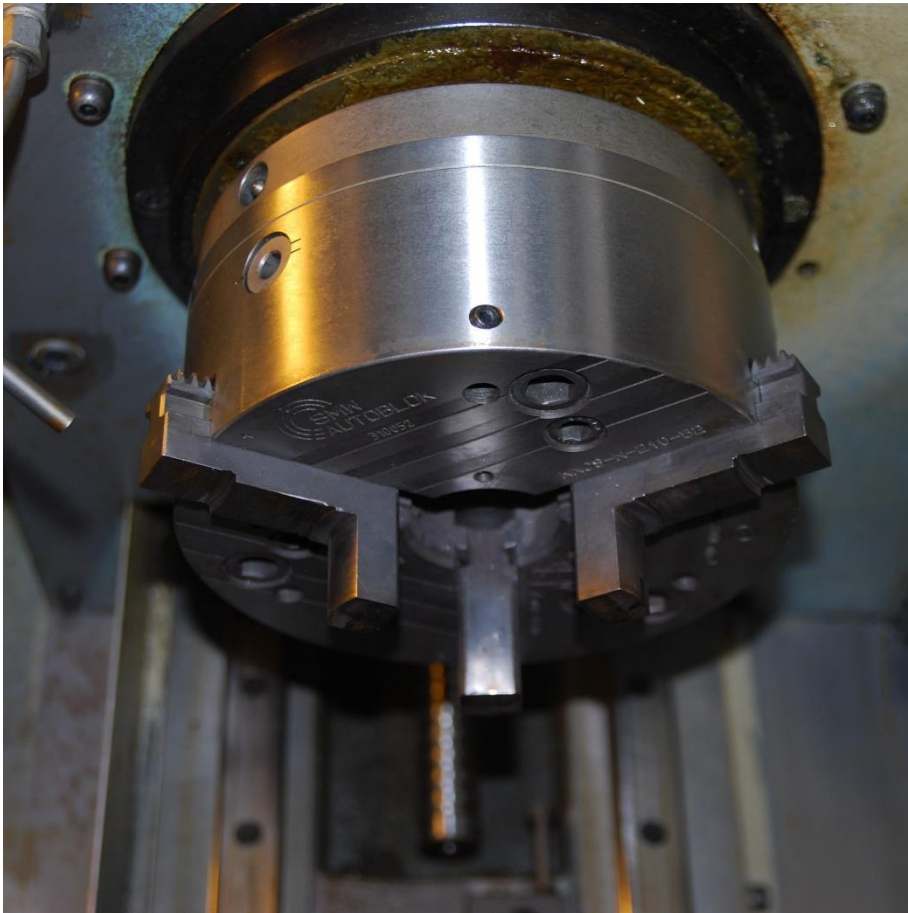
Motor	Spindle Motor (40 % ED / Continuous)	AC 11 / 7.5 KW
	For Rotary Tools (15 Minutes Rated / Continuous)	AC 3.7 / 2.2 Kw
	X- Axis Feed Motor	AC 2.1 KW
	Z – Axis Feed motor	AC 3.8 KW
	For Turret Indexing	AC 2.2 KW
	Oil Pressure Pump	400 W
	For Cutting	1.1 kW
	Spindle Coolant Pump	400 W
Feed Rate	Rapid transverse (X – Axis)	30m/min (1181 in/min)
	Rapid transverse (Y – Axis)	30m/min (1181 in/min)
	Cutting Feed (Per Revolution)	0.001 ~ 1000 mm/rev (0.001 ~ 40 in/rev)
	Jog Feed	0 ~ 5000 mm/ min (0 ~ 200 in/min)
Power Source	Power Supply	23kVA
	Pneumatic source pressure	0.5Mpa
	Pneumatic source Rate of Flow	150 L\min
Machine Weight		5000 kg (11000 lbs)

The above Info is to the best of our Knowledge, but it's not binding in detail.

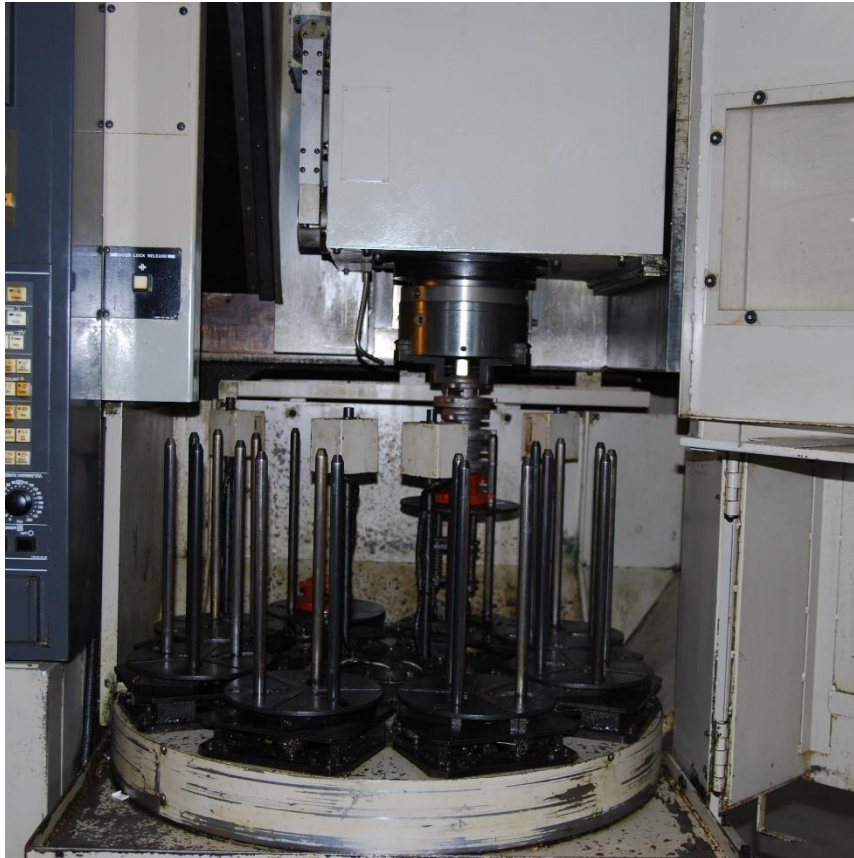
MACHINE PHOTOS



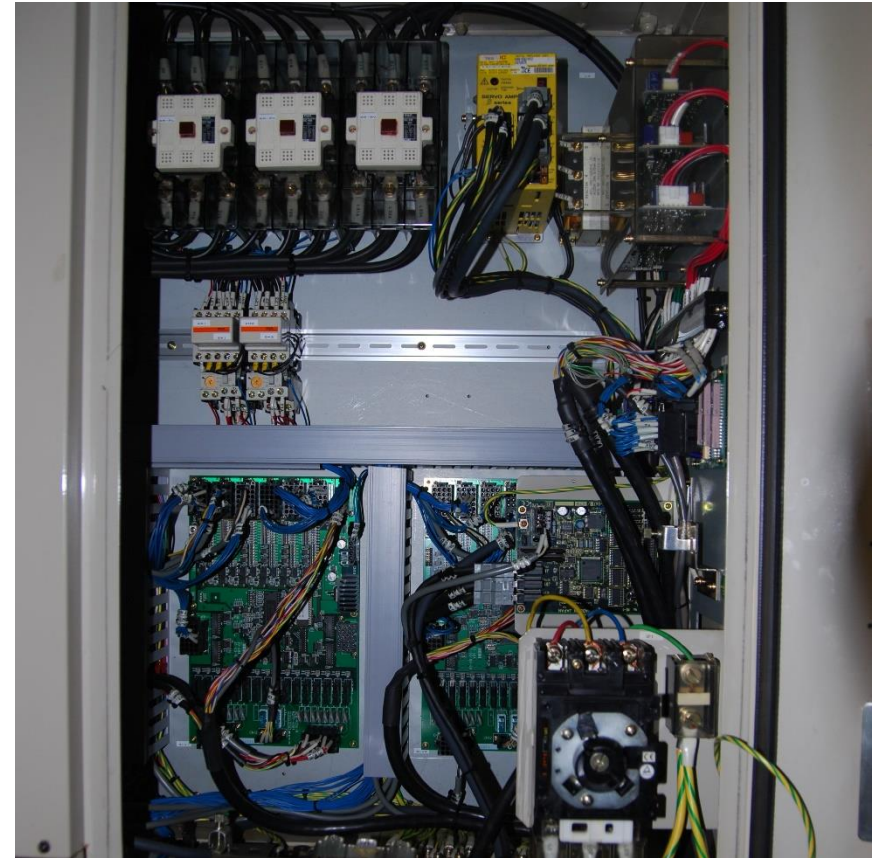
The above Info is to the best of our Knowledge, but it's not binding in detail.



The above Info is to the best of our Knowledge, but it's not binding in detail.



The above Info is to the best of our Knowledge, but it's not binding in detail.



The above Info is to the best of our Knowledge, but it's not binding in detail.