

MAZAK | INTEGREX 40 – ATC | 1989 | MAZATROL

TURN MILL



MODEL

INTEGREX 40 - ATC

YEAR

1989

CONTROLLER

MAZATROL

The above Info is to the best of our Knowledge, but it's not binding in detail.

TECHNICAL DATA

Mazak				
Items	Chucker 1000	Universal		
		1000	1500	2000
Maximum swing mm		ø560		
Maximum cutting diameter mm		ø400		
Distance between centers mm	-	1040	1550	2060
Turret travel:				
X axis		615 (605 + 10)		
Z axis mm	1102	1102	1612	2122
Spindle nose		A2-8 (A1-11)		
Hole through spindle		ø80 mm (ø104 mm)		
Spindle internal taper		AST No. 350 (Taper 1/16)		
Spindle center		M.T. No. 5		
Spindle speed & range		No. of spindle speed changes (Hydraulic shift: 3 steps) 5 - 3000 rpm (3 - 2200 rpm)		
Tailstock spindle travel mm	-	130		
Tailstock spindle center		M.T. No. 5		
Maximum tailstock thrust force	-	1500 kg		
Maximum load		Chuck work: 300 kg (400 kg) Shaft work: 1500 kg including chuck		
Standard chuck		KITAGAWA N-12A0815		
Rapid speed:				
X axis		12,000 mm/min		
Z axis		15,000 mm/min		
Least command increment:				
X axis mm		0.001 (in diameter)		
Z axis		0.001		
Main drive motor	AC motor	40HP (30KW)		
Net weight: kg		9100 (20065.5)	9400 (20727)	10300 (22711.5)
				11100 (24475.5)

Hole through spindle: ø104 mm is optionally available. Between ().
Maximum spindle speed is 2.200 rpm.

The above Info is to the best of our Knowledge, but it's not binding in detail.

MACHINE PHOTOS



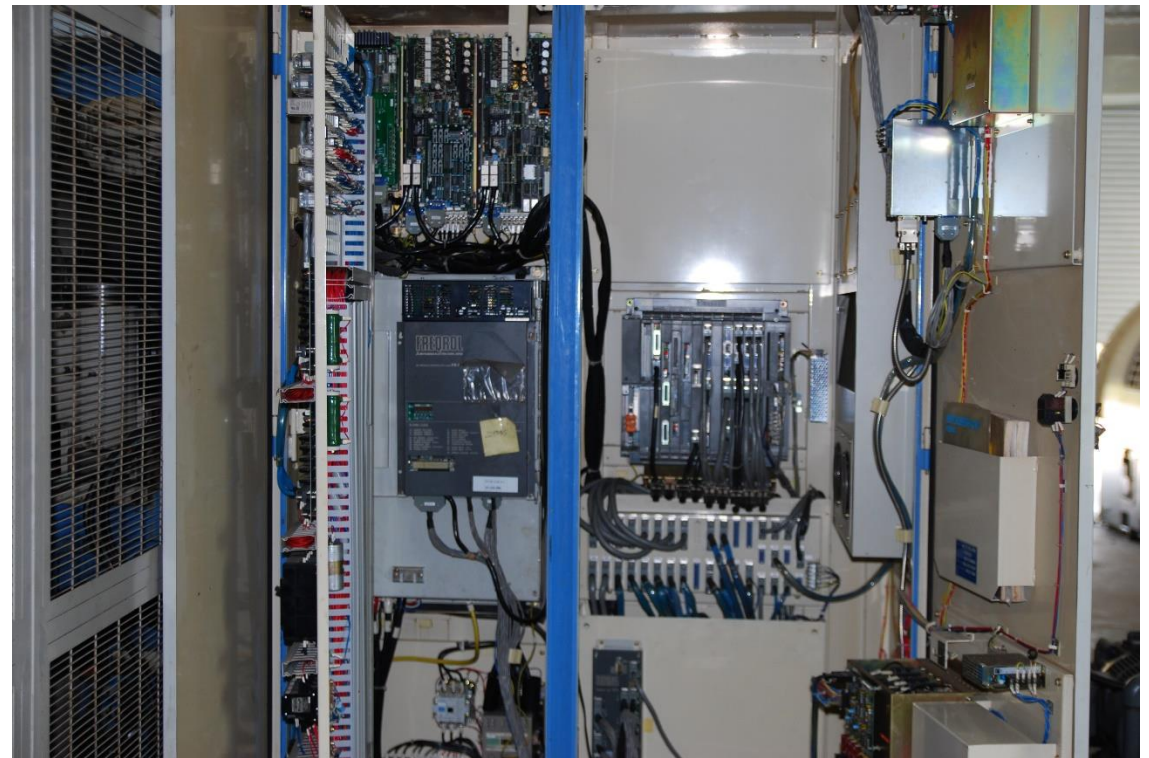
The above Info is to the best of our Knowledge, but it's not binding in detail.



The above Info is to the best of our Knowledge, but it's not binding in detail.



The above Info is to the best of our Knowledge, but it's not binding in detail.



The above Info is to the best of our Knowledge, but it's not binding in detail.